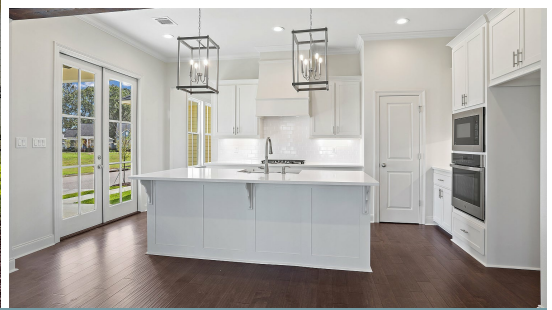
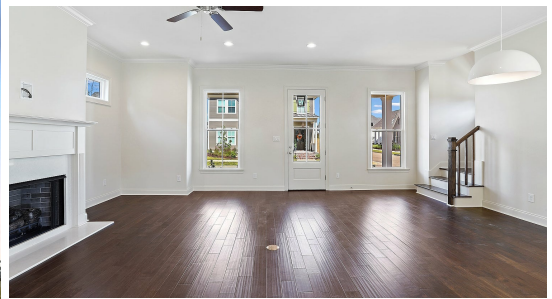


MOVE-IN READY



1196 Madison Court

2,260
SQ.FT

4
BEDS

3.0
BATHS

164
LOT

\$402,400

The Newport is a two story home with four beds and three full baths and over 2200 sq feet of living space. Enter this spacious and very efficient home from the large and inviting front porch into the open living, kitchen and dining. The gourmet kitchen is separated from the living room by a stained cypress beam and features custom painted cabinets with under cabinet lighting and 5" hardware pulls, 3cm Organic White quartz countertops and a custom backsplash, large center island with stainless 30" single basin farm sink and overhanging pendant lights, stainless appliances including a gas cooktop with a single wall oven and built in microwave and a large walk in pantry. The master suite is located privately off of the rear of the home with a spa like bath featuring dual vanities, separate soaking tub and separate tiled shower with a seamless shower door. There is an additional bed / bath down and two beds upstairs with a full bath and an open loft area. There is a large covered patio off of the kitchen and it will be plumbed for a gas grill. Professionally landscaped and fully sodded yard!



Madylin Travieso | 225-228-1123 | onlinesales@levelbr.com

LevelHomesLifestyle.com

The renderings, configurations and information presented is for illustrative purposes only, may not be accurate in every detail, and may contain optional features. All room dimensions and configurations are approximations only. The right to make modifications or changes without prior notice is reserved. This plan is the property of Level Homes and may not be duplicated or modified without expressed permission. New home sales by Keller Williams Red Stick Partners. Each office independently owned and operated.

