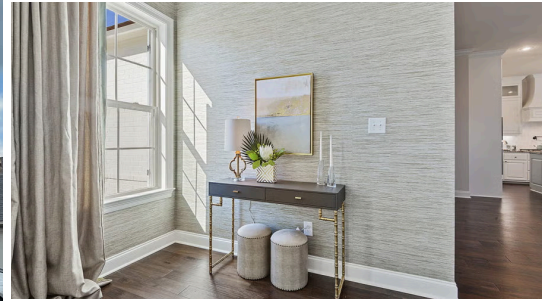


ESTIMATED COMPLETION OCT 2025



205 Sweet Harvest Road

3,210  
SQ.FT

5  
BEDS

4  
BATHS

6  
LOT

**\$455,250**

The Belmont floorplan is a stunning two-story home featuring 5 bedrooms, 4 full baths, a large open great room and a spacious loft and is perfect for a large or growing family! Step into the grand foyer which opens to the stunning wood tread staircase with iron balusters leading upstairs and the large open great room and kitchen. The great room is centered around a ventless gas fireplace with a granite surround and is open to the dining and kitchen. The gourmet kitchen features painted custom wood cabinetry with under cabinet lighting and 5" hardware pulls, 3cm White Ice granite countertops, white subway tile backsplash in a herringbone pattern, stainless steel appliances including a gas cooktop, single wall oven and a built-in microwave, oversized island/breakfast bar with 30" single basin stainless steel sink and overhanging pendant lighting, and a walk-in pantry. The master bedroom is downstairs and includes a spa-like bath featuring a separate 5' soaking tub with a granite surround and a job-built tiled shower with a seamless glass enclosure, dual sinks with granite countertops, custom framed mirrors, separate water closet, and large closet with custom wood shelving. Downstairs you will also find an additional bedroom/study with a full bath in the hall. Upstairs there is a spacious loft, 3 nice-sized bedrooms with walk-in closets, and 2 full baths (one being a Jack and Jill bath). The yard will professionally landscaped & fully sodded.

\*The completed pictures are not of the actual home but are of the same floorplan; colors and options may vary.



**LEVEL  
HOMES**

Tiffany McGinty | 337-508-1148 | [onlinesales@levelbr.com](mailto:onlinesales@levelbr.com)

**[LevelHomesLifestyle.com](https://LevelHomesLifestyle.com)**

The renderings, configurations and information presented is for illustrative purposes only, may not be accurate in every detail, and may contain optional features. All room dimensions and configurations are approximations only. The right to make modifications or changes without prior notice is reserved. This plan is the property of Level Homes and may not be duplicated or modified without expressed permission. New home sales by Keller Williams Red Stick Partners. Each office independently owned and operated.

