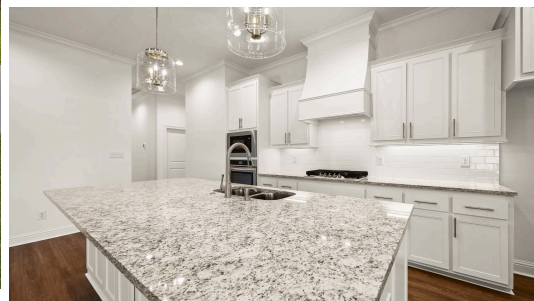
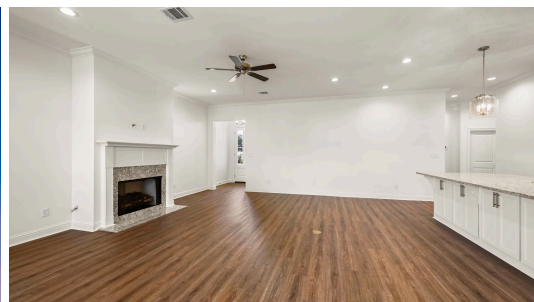


MOVE-IN READY



21489 Bluefin Drive

2,315
SQ.FT

4
BEDS

2.5
BATHS

99
LOT

\$363,950

Franklin B floorplan by Level Homes ready now in Bruce's Harbor! The Franklin is a spacious one story floor plan with an open living, dining and kitchen, 4 bedrooms, 2.5 baths and just over 2,300 sq ft. The living room is centered around the vent-less gas fireplace with granite surround and has views to the large covered rear porch and backyard! The gourmet kitchen features custom painted cabinetry with under cabinet lighting and 5" hardware pulls, stainless steel appliances including a 30"-5 burner gas cooktop, built in microwave and single wall oven, 3 cm White G granite, white subway tile backsplash, 2 pendant lights over the large center island and a walk in corner pantry. Large master suite with spa like bath is located at the back of the home and features a custom tiled shower with seamless shower door, separate soaking tub with 3 cm granite surround, his and her vanities with granite countertops and custom framed mirrors, separate water closet and a spacious walk in closet. There are 3 additional bedrooms all with nice size walk in closets, full bath, powder room, large laundry room with single laundry wall cabinet and a space off of the garage entry for an "optional" mud bench. The yard is professionally landscaped and fully sodded!



**LEVEL
HOMES**

Scott Hornak | 225-396-3668 | onlinesales@levelbr.com

LevelHomesLifestyle.com

The renderings, configurations and information presented is for illustrative purposes only, may not be accurate in every detail, and may contain optional features. All room dimensions and configurations are approximations only. The right to make modifications or changes without prior notice is reserved. This plan is the property of Level Homes and may not be duplicated or modified without expressed permission. New home sales by Keller Williams Red Stick Partners. Each office independently owned and operated.

