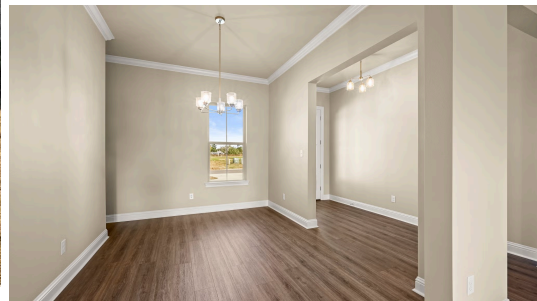
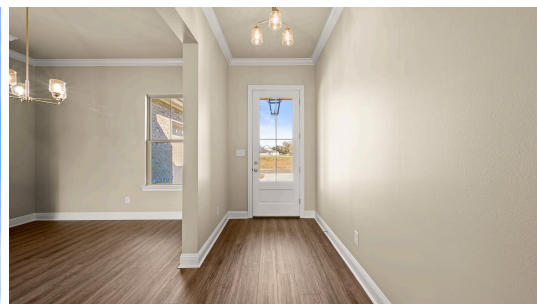


MOVE-IN READY



37451 Cattle Avenue

2,573  
SQ.FT

4  
BEDS

3  
BATHS

6  
LOT

**\$476,655**

Myrtle B floorplan by Level Homes underway in Delaune Estate! The Myrtle is the perfect 4 bedroom, 3 bath triple split floor plan with a large open great room, kitchen and breakfast room. Our Myrtle floorplan features a grand foyer which opens into the formal dining and great room. The great room features a ventless gas fireplace with granite surround and has views to the covered patio and backyard. The gourmet kitchen features custom painted cabinetry with 5" hardware pulls, stainless steel appliances including a 30"-5 burner gas cooktop, built in wall oven and microwave, custom pot filler, large center island with 30" single basin stainless steel farm sink and pendant lighting, 3 cm Uba Tuba granite, subway tile backsplash and a walk-in corner pantry. The master bedroom is located off the rear of the home and features a spa like master bath with dual vanities with granite countertops, custom framed mirrors, soaking tub with granite surround, a separate tiled shower, water closet and walk in closet with custom shelving. Large utility room with a built in base and upper cabinets, coat closet and a mudroom with space for an "optional" mud bench located off the garage entry. The yard is professionally landscaped and fully sodded.



**LEVEL  
HOMES**

Bonnie Plaisance | 225-240-4602 | [onlinesales@levelbr.com](mailto:onlinesales@levelbr.com)

**[LevelHomesLifestyle.com](http://LevelHomesLifestyle.com)**

The renderings, configurations and information presented is for illustrative purposes only, may not be accurate in every detail, and may contain optional features. All room dimensions and configurations are approximations only. The right to make modifications or changes without prior notice is reserved. This plan is the property of Level Homes and may not be duplicated or modified without expressed permission. New home sales by Keller Williams Red Stick Partners. Each office independently owned and operated.

