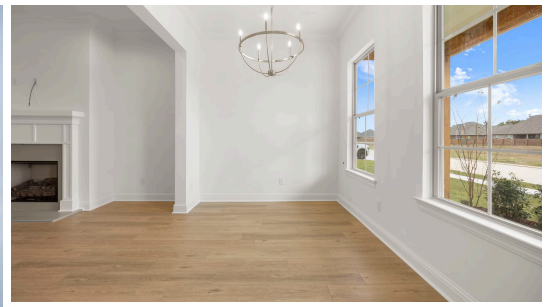


UNDER CONTRACT



236 Sophia Drive

2,015
SQ.FT

4
BEDS

2
BATHS

22
LOT

\$381,400

The Hadley is a one story, 4 bedroom, 2 bath home with an open and split floor plan and just over 2000 sq feet of living. You will enter this home from the inviting front porch with stained cypress beams into the foyer which leads you to the formal dining room, open living room and kitchen. The living room is centered around a ventless gas fireplace with wood trim casing, Grey Savoye quartz surround and a milled mantle and has room for “optional” built in wall units. The gourmet kitchen features custom painted cabinetry with 5" hardware pulls and under cabinet lighting, large center island with sink and overhanging pendant lights, Grey Savoye quartz countertops with a white subway tile backsplash, stainless appliance package, and a walk-in pantry. The master suite is very spacious and features a spa-like bath with dual vanities, quartz countertops, framed mirrors, separate 5' soaking tub, tiled shower with a seamless glass enclosure and a walk-in closet. There are three additional bedrooms, a full bath with dual vanities, a huge walk in laundry room with a space for “optional” cabinets as well as a “mud bench / optional desk area” at the garage entry. The yard will be fully sodded and professionally landscaped!



Linda Dick | 985-412-8632 | onlinesales@levelbr.com

LevelHomesLifestyle.com

**LEVEL
HOMES**

The renderings, configurations and information presented is for illustrative purposes only, may not be accurate in every detail, and may contain optional features. All room dimensions and configurations are approximations only. The right to make modifications or changes without prior notice is reserved. This plan is the property of Level Homes and may not be duplicated or modified without expressed permission. New home sales by Keller Williams Red Stick Partners. Each office independently owned and operated.

