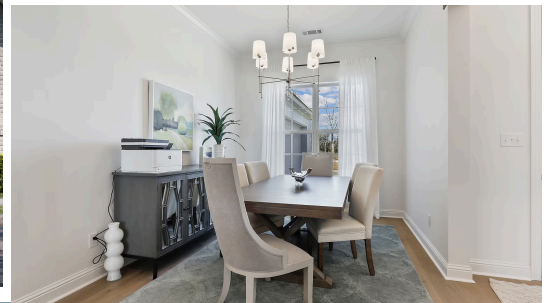


ESTIMATED COMPLETION NOV 2026



146 Sophia Drive

3,054  
SQ.FT

5  
BEDS

4.5  
BATHS

12  
LOT

**\$484,655**

The Vacherie is the largest of our new floorplans, boasting over 3,000 square feet of living space, 5 bedrooms, and 4.5 bathrooms. This home has an open living room, breakfast nook, and kitchen with an option for either a formal dining space or office. The primary suite is located on the first floor and has a spa-inspired en suite bathroom and large walk-in closet that attaches to the laundry room. There is an additional guest suite on the first floor with an attached bathroom and walk-in closet. Upstairs includes three additional bedrooms, two bathrooms, a large loft space and an additional flex space that can be used for an office, storage, or reading nook!

\*The completed pictures are not of the actual home but are of the same floorplan; colors and options may vary.



Linda Dick | 985-412-8632 | [onlinesales@levelbr.com](mailto:onlinesales@levelbr.com)

[LevelHomesLifestyle.com](http://LevelHomesLifestyle.com)

**LEVEL  
HOMES**

The renderings, configurations and information presented is for illustrative purposes only, may not be accurate in every detail, and may contain optional features. All room dimensions and configurations are approximations only. The right to make modifications or changes without prior notice is reserved. This plan is the property of Level Homes and may not be duplicated or modified without expressed permission. New home sales by Keller Williams Red Stick Partners. Each office independently owned and operated.

