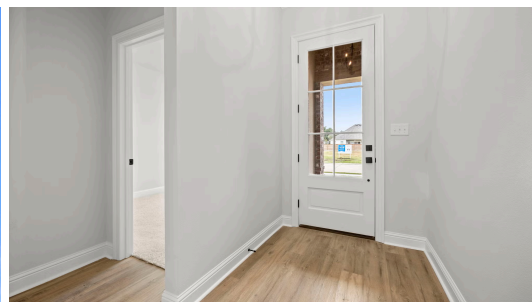


MOVE-IN READY



110 Sophia Drive

2,203
SQ.FT

4
BEDS

3
BATHS

3
LOT

\$398,310

The Dawson is a one-story plan with just over 2200 sq feet of living area and features four bedrooms and three full baths. You will enter the home into the foyer which leads you into the open kitchen, dining and living room. The gourmet kitchen has custom painted cabinetry with 5-inch hardware pulls and under cabinet lighting, large center island with single basin granite composite sink and overhanging pendant lights, 3cm Avenza White quartz countertops, gray herringbone subway tile backsplash, stainless appliance package and a walk-in corner pantry. The spacious living room is separated from the kitchen by an exposed beam and is centered around a vent-less gas fireplace. Double doors open from the living room to the large covered rear porch and yard. The master suite is very spacious and has a spa-like bath with separate dual vanities, framed mirrors, separate soaking tub with quartz surround, job built tiled shower, and a spacious walk-in closet. Bedrooms two and three are located at the back of the home and share a hall bathroom with dual sinks. Bedroom four is located at the front of the home and has its own en-suite bathroom and a walk-in closet. There is a large laundry room and mudroom with space for an “optional” desk and/or built in mud bench located off the garage entry. The yard will be professionally landscaped and fully sodded.



**LEVEL
HOMES**

Linda Dick | 985-412-8632 | onlinesales@levelbr.com

LevelHomesLifestyle.com

The renderings, configurations and information presented is for illustrative purposes only, may not be accurate in every detail, and may contain optional features. All room dimensions and configurations are approximations only. The right to make modifications or changes without prior notice is reserved. This plan is the property of Level Homes and may not be duplicated or modified without expressed permission. New home sales by Keller Williams Red Stick Partners. Each office independently owned and operated.

